



**FLEXIBLE**  
**+**  
**RELIABLE**  
**+**  
**PRACTICAL**

**Introducing REACH Wireless – Apollo's new hybrid fire system**





## CONTENTS

- 01 Introducing REACH Wireless
- 02 Applications for REACH Wireless
- 04 Why choose REACH Wireless?
- 06 System architecture
- 08 Free virtual training
- 09 Online support
- 10 A Comprehensive System
- 12 Get in touch

REACH Wireless is brought to you by Apollo Fire Detectors, the UK's leading manufacturer of fire detection and alarm devices. With a global reputation for innovation, quality and reliability, Apollo products keep people safe from fire in over 100 countries around the world.

“ REACH Wireless is the latest in our range of hybrid-wireless fire detection. Created to make installation and commissioning quicker and easier, we have introduced a full suite of products including red and white flash VADs.

REACH Wireless has been designed to make extending an Apollo wired loop effortless. With an easy-to-use survey kit, REACH Wireless is **FLEXIBLE + RELIABLE + PRACTICAL.** ”

**Craig Mole**  
Product Manager, Apollo Fire Detectors Ltd.



Apollo's hybrid-wireless fire alarm systems deliver flexible solutions for listed buildings, temporary structures and high-rise residential apartments, extending detection without compromising the level of protection from fire. Keeping people safe from fire, every second of every day.

# APPLICATIONS FOR REACH WIRELESS

REACH Wireless saves you time and solves installation problems.



## EXTENSIONS

**REACH** allows an existing fire system to be extended by **bridging wireless devices** to the wired loop, using the REACH Loop Interface.

A new fire loop is not required, which **reduces cost and effort** - especially if the existing panel doesn't have any more available loops, as long as there is spare capacity on the loop.

## OUTBUILDINGS

In a similar way to *Extensions*, REACH **seamlessly extends the existing loop** to outbuildings without having to dig a trench and lay trunking.

This eliminates the need for a second, independent panel and loop for that additional structure.



Ideal for **time sensitive installations** where lengthy downtime or disruption is not an option.



## HERITAGE

Heritage or listed buildings typically have **additional restrictions** on disrupting the fabric of the building by breaking walls or adding trunking.

In this case, it may be **easier to install surface-mounted wireless products** to meet fire system requirements.



## TEMPORARY

Temporary or Retail structures can have restrictions on allowable modifications, or need to be **installed in a short timeframe**.

REACH can be surveyed ahead of time, off-site, and physically installed very quickly to **minimise time onsite or downtime of the building**.

# WHY CHOOSE REACH WIRELESS?



## **Flexible**

system for *'hard to wire'*  
applications



## **Extend**

an Apollo wired system  
seamlessly



## **Reliable**

design that meets  
EN54:25



## **Regularly**

monitored by the panel  
for signal integrity

REACH Wireless is Apollo's latest hybrid range. It delivers optimised radio coverage while minimising battery use, which gives greater flexibility and enhanced performance compared with a wired system.



## Practical

installation that saves time and effort



## Training

online and in-person to reinforce best practice



## Complete

system with Dual Optical Detectors & VADs



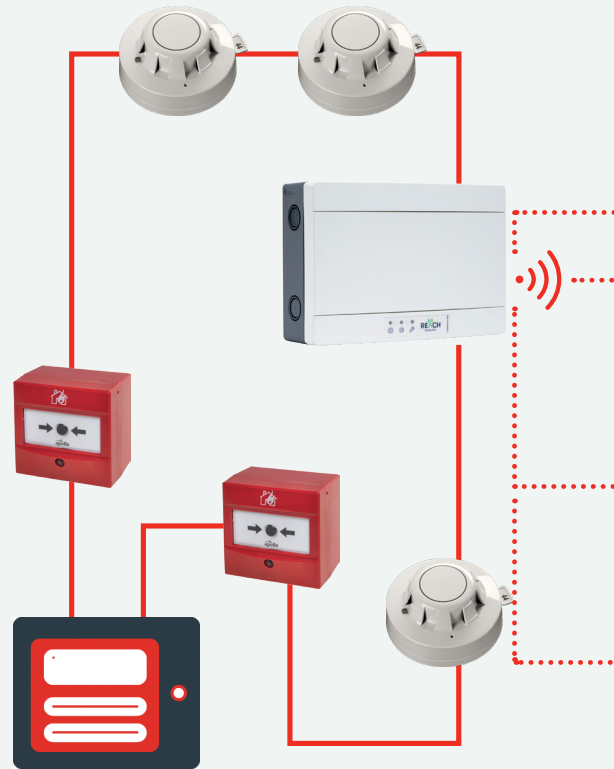
## Survey Kit

for easy onsite surveying and commissioning

# SYSTEM ARCHITECTURE

## PRODUCT FEATURES:

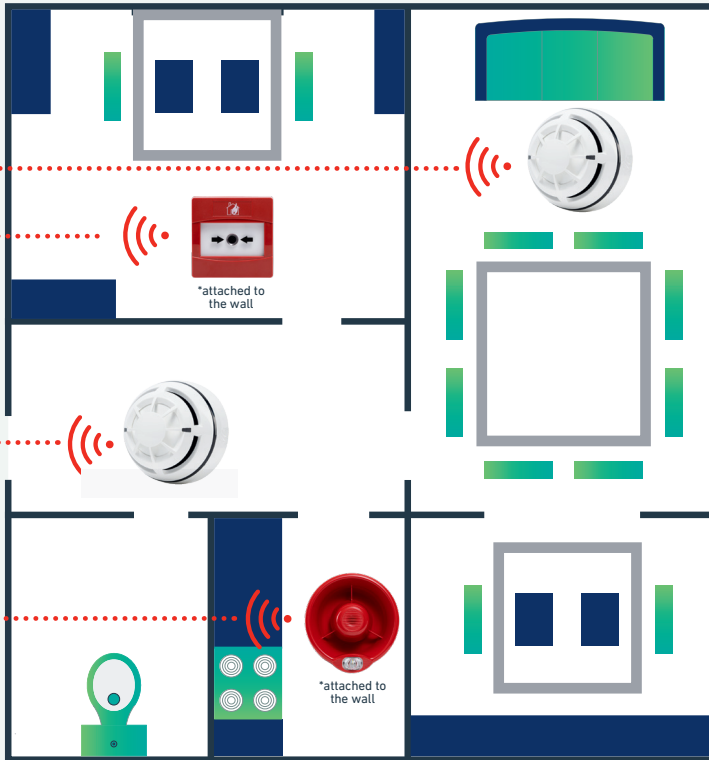
- Up-to 32 wireless devices per loop-interface
- 100m radio range (clear line of sight)
- 44 RF channels in redundancy pairs, enabling reliable wireless connection
- Multi-angle antennas to maximise signal coverage
- Up-to 10 interfaces per loop, powered by the loop
- Built-in short-circuit isolator
- Compatible with all Apollo wired addressable systems



## MAIN BUILDING

This example illustrates XP95 detectors however any addressable range can be used in combination with the REACH Wireless range.





## EXTENSION

### PRODUCTS SHOWN IN DIAGRAM:

#### Wired

**SA5900-908APO**  
Intelligent Manual Call Point

**55000-600APO**  
XP95 Optical Smoke Detector

**RW1700-030APO**  
REACH XP95 Loop-Interface Module

#### Wireless

**RW1000-600APO**  
REACH Optical Smoke Detector

**RW1000-700APO**  
REACH Multi-Sensor Detector  
(Optical/Heat)

**RW1500-220APO**  
REACH Open-Area Sounder VAD Cat. W -  
Red Body (White-Flash) (W-2.5-7)

**RW1900-901APO**  
REACH Manual Call Point

Please visit [apollo-fire.co.uk](http://apollo-fire.co.uk)  
for the full range of REACH products.

# FREE VIRTUAL TRAINING

We offer a comprehensive programme of industry CPDs and product webinars. For groups of five or more, enquire about a **FREE** exclusive CPD session.

Register online:  
[apollo-fire.co.uk/training-support/cpds-webinars](http://apollo-fire.co.uk/training-support/cpds-webinars)

## CPD programme

Our CPD accredited courses are hosted live every fortnight. They include a Q&A and participants receive a digital CPD certificate after the session.



## CPD topics

- Detection principles and device selection
- Service, test and maintenance of fire detection equipment
- An introduction to BS 5839 Pts 1 & 6
- An introduction to BS 7273-4
- **REACH Wireless**
- EN54-23 VADS
- False alarm management
- Fire safety in healthcare buildings UK

## Product webinars

We have a variety of on-demand product webinars on our website, available for you to watch anytime, anywhere.

Courses cover everything from product features and benefits, to best practice, applications, FAQs and more.

## Webinar topics

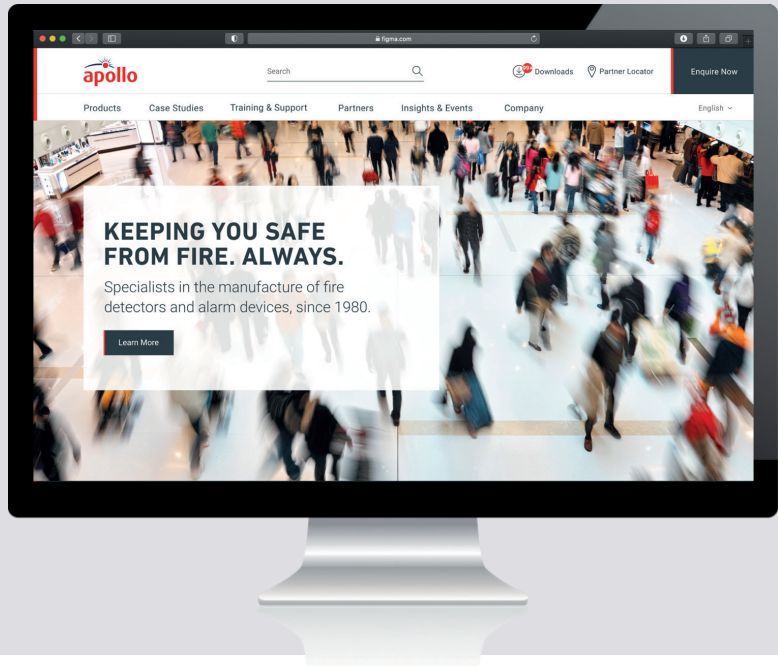
- Capabilities of XP95, Discovery & Soteria
- AlarmSense
- XPander
- Apollo Test Set:
  - An introduction
  - Loop view
  - Diagnostics
- Dimension: installation & maintenance

# ONLINE SUPPORT

The Apollo website is an invaluable source of information about our business, our brand, our products and our people. The site enables you to access all the features listed below. If you can't find the information you need or would like help navigating the site, please contact [marketing@apollo-fire.com](mailto:marketing@apollo-fire.com)

## Visit [apollo-fire.co.uk](http://apollo-fire.co.uk)

- Contact our Technical Support and Customer Services Teams
- Register for training webinars and CPDs
- Find and download product information, including certificates, datasheets and installation guides
- Learn about our company and our opinion on industry matters
- View case studies
- Identify contacts from our Partner Directory (Distributors, Integrators and System Panel Partners)



# A COMPREHENSIVE SYSTEM



## DETECTORS

### PART NUMBER

### ITEM NAME

RW1000-400APO	REACH Heat Detector
RW1000-600APO	REACH Optical Smoke Detector
RW1000-700APO	REACH Multi-Sensor Detector (Optical/Heat)

## AUDIO VISUAL (AV)

### PART NUMBER

### ITEM NAME

RW1300-110APO	REACH Sounder Base
RW1300-210APO	REACH Sounder VAD Base (White-Flash) (C-3-15)
RW1300-211APO	REACH Sounder VAD Base (Red-Flash) (C-3-10)
RW1500-110APO	REACH Open-Area Sounder - White Body
RW1500-120APO	REACH Open-Area Sounder - Red Body
RW1500-210APO	REACH Open-Area Sounder VAD Cat.W - White Body (White Flash) (W-2.5-7)
RW1500-220APO	REACH Open-Area Sounder VAD Cat.W - Red Body (White Flash) (W-2.5-7)

**REACH Wireless** offers a wide-range of EN54 product solutions to help overcome installation barriers.

To view the latest product options & information  
visit: [apollo-fire.co.uk](http://apollo-fire.co.uk)



## INTERFACES

### PART NUMBER

### ITEM NAME

RW1700-030APO	REACH XP95 Loop-Interface Module
RW1700-052APO	REACH Input Module
RW1500-800APO	REACH Output Module
RW1700-051APO	REACH Remote Indicator Module
RW1900-901APO	REACH Manual Call Point

## ACCESSORIES

### PART NUMBER

### ITEM NAME

RW1800-060APO	REACH Survey Kit Lite
RW1300-010APO	REACH AV Base Cap - White
RW1300-020APO	REACH AV Base Cap - Red



## WE'RE PASSIONATE ABOUT KEEPING PEOPLE SAFE FROM FIRE...

... that's why we're offering free ongoing advice to help you choose the best solution for your building. Get in touch at [solutions@apollo-fire.com](mailto:solutions@apollo-fire.com)



# WE'RE HERE TO HELP



We work with a network of Distributors, System Partners, and System Integrators worldwide. Find your perfect partner at [www.apollo-fire.co.uk/partners](http://www.apollo-fire.co.uk/partners)

Find your comprehensive installation guide and datasheet online at [www.apollo-fire.co.uk/reach](http://www.apollo-fire.co.uk/reach)

For survey and installation support and 'how-to' videos, visit: [www.youtube.com/c/ApolloFireDetectorsHowTo](http://www.youtube.com/c/ApolloFireDetectorsHowTo)

For further support and enquiries, call our friendly team on **+44 (0)23 9249 2412**

Apollo Fire Detectors Limited  
36 Brookside Road, Havant  
Hampshire PO9 1JR

Telephone

**+44 (0)23 9249 2412**

Email

[sales.enquiries@apollo-fire.com](mailto:sales.enquiries@apollo-fire.com)



# KEEPING YOU SAFE FROM FIRE. ALWAYS.

Our purpose is simple; to keep people safe from fire every second of every day.

We specialise in the design and manufacture of high-quality fire detection solutions that protect people from fire in over 100 countries around the world. We are proud to be a part of Halma, a FTSE 50 global group of life-saving technology companies.

Apollo Fire Detectors Limited  
36 Brookside Road, Havant  
Hampshire PO9 1JR

Telephone **+44 (0)23 9249 2412**  
Email **[solutions@apollo-fire.com](mailto:solutions@apollo-fire.com)**  
**[apollo-fire.co.uk](http://apollo-fire.co.uk)**